

# I706 v0

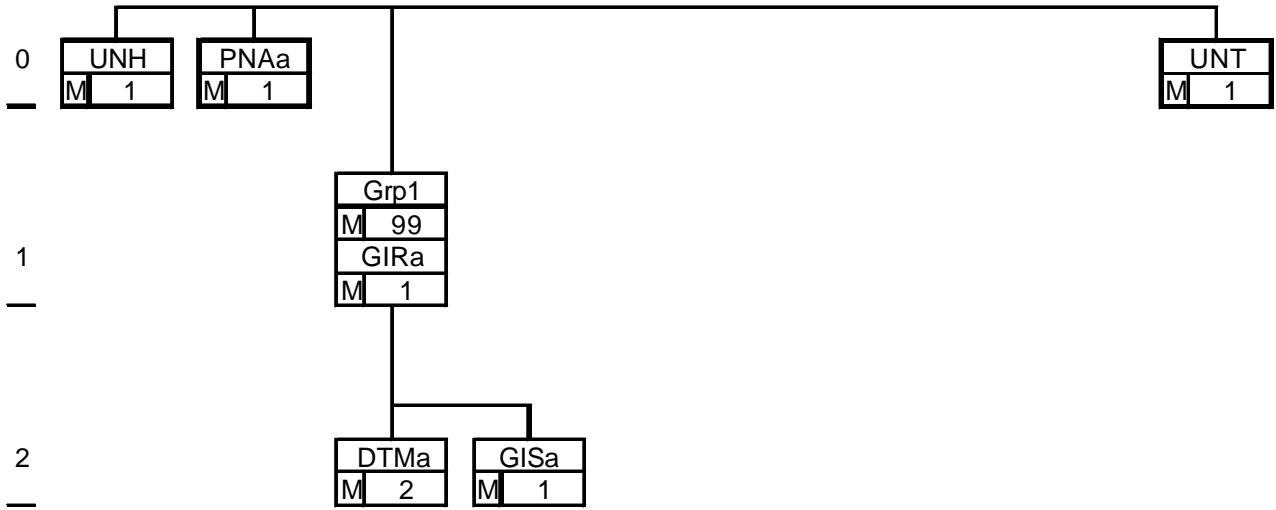
## 05/09/2003

Message name : I706  
Message version 0  
Date released 05/09/2003  
Responsible agency BCSS-KSZ  
Message description Consultation SIS par NISS et période

Message type I706  
Directory name UN/EDIFACT TRIAL DIRECTORY  
Directory version 92.1

### *In release of 05/09/2003*

- Set on e-form the paper version of 11/05/1998
- Remove of Grp2 (authentication) that is never used



<b>Message</b>		M	1
UNH	Message header	M	1
PNAa	Person name	M	1
<b>Group 1</b>		M	99
GIRa	Related Identification numbers	M	1
DTMa	Date / Time / Period	M	2
GISa	General indicator	M	1
UNT	Message trailer	M	1

**Message****UNH - M - 1 - MESSAGE HEADER****PNAa - M - 1 - PERSON NAME**

NISS  
INSZ

**Group1 - M - 99 -****GIRa - M - 1 - RELATED IDENTIFICATION NUMBERS**

N° logique de la carte SIS + Indicateur de l'état de la carte SIS

**DTMa - M - 2 - DATE/TIME/PERIOD**

(A) Date de début de la validation

(B) Date de fin de la validation

**GISa - M - 1 - GENERAL INDICATOR**

Indicateur de la personnalisation de la carte SIS

**(End of Group1)**

**UNT - M - 1 - MESSAGE TRAILER**

**(End of Message)**

UNH MESSAGE HEADER			M	1	
En-tête du message					
0062	MESSAGE REFERENCE NUMBER	AN..14	M	R	
S009	MESSAGE IDENTIFIER		M	R	
0065	Message type identifier	AN..6	M	R	"1706"
0052	Message type version number	AN..3	M	R	"000"
0054	Message type release number	AN..3	M	R	"000"
0051	Controlling agency	AN..2	M	R	"BK"
0057	Association assigned code	AN..6	C	X	
0068	COMMON ACCESS REFERENCE	AN..35	C	X	
S010	STATUS OF THE TRANSFER		C	X	
0070	Sequence message transfer number	N..2	M	X	
0063	First/Last sequence message transfer indication	A1	C	X	

PNAa PERSON NAME			M	1	
Assuré social					
3925	PARTY QUALIFIER	AN..3	C	R	"504"
C206	IDENTIFICATION NUMBER		C	R	
7402	Identity number	AN..35	M	R	NISS
7405	Identity number qualifier	AN..3	C	X	
3039	Party id identification	AN..17	C	X	
1131	Code list qualifier	AN..3	C	X	
3055	Code list responsible agency, coded	AN..3	C	X	
4405	Status, coded	AN..3	C	X	
3797	PERSON NAME TYPE, CODED	AN..3	C	X	
3799	PERSON NAME STATUS, CODED	AN..3	C	X	
C816	NAME COMPONENT DETAILS		C	X	
3825	Name component qualifier	AN..3	C	X	
3826	Name component	AN..70	C	X	
3839	Name qualifier	AN..3	C	X	
3841	Name component representation, coded	AN..3	C	X	
C816	NAME COMPONENT DETAILS		C	X	
3825	Name component qualifier	AN..3	C	X	
3826	Name component	AN..70	C	X	
3839	Name qualifier	AN..3	C	X	
3841	Name component representation, coded	AN..3	C	X	
C816	NAME COMPONENT DETAILS		C	X	
3825	Name component qualifier	AN..3	C	X	
3826	Name component	AN..70	C	X	
3839	Name qualifier	AN..3	C	X	
3841	Name component representation, coded	AN..3	C	X	
C816	NAME COMPONENT DETAILS		C	X	
3825	Name component qualifier	AN..3	C	X	
3826	Name component	AN..70	C	X	
3839	Name qualifier	AN..3	C	X	
3841	Name component representation, coded	AN..3	C	X	

<b>GIRa RELATED IDENTIFICATION NUMBERS</b>				<b>M</b>	<b>1</b>
N° logique + Indicateur d'état de la carte SIS					
7297	SET IDENTIFICATION QUALIFIER	AN..3	M	R	"552"
C206	IDENTIFICATION NUMBER		M	R	
7402	Identity number	AN..35	M	R	N° logique de la carte SIS
7405	Identity number qualifier	AN..3	C	X	
3039	Party id identification	AN..17	C	X	
1131	Code list qualifier	AN..3	C	X	
3055	Code list responsible agency, coded	AN..3	C	X	
4405	Status, coded	AN..3	C	X	
C206	IDENTIFICATION NUMBER		C	R	
					Indicateur d'état de la carte SIS "C" conforme "A" Annulée
7402	Identity number	AN..35	M	R	
7405	Identity number qualifier	AN..3	C	X	
3039	Party id identification	AN..17	C	X	
1131	Code list qualifier	AN..3	C	X	
3055	Code list responsible agency, coded	AN..3	C	X	
4405	Status, coded	AN..3	C	X	
C206	IDENTIFICATION NUMBER		C	X	
7402	Identity number	AN..35	M	X	
7405	Identity number qualifier	AN..3	C	X	
3039	Party id identification	AN..17	C	X	
1131	Code list qualifier	AN..3	C	X	
3055	Code list responsible agency, coded	AN..3	C	X	
4405	Status, coded	AN..3	C	X	
C206	IDENTIFICATION NUMBER		C	X	
7402	Identity number	AN..35	M	X	
7405	Identity number qualifier	AN..3	C	X	
3039	Party id identification	AN..17	C	X	
1131	Code list qualifier	AN..3	C	X	
3055	Code list responsible agency, coded	AN..3	C	X	
4405	Status, coded	AN..3	C	X	
C206	IDENTIFICATION NUMBER		C	X	
7402	Identity number	AN..35	M	X	
7405	Identity number qualifier	AN..3	C	X	
3039	Party id identification	AN..17	C	X	
1131	Code list qualifier	AN..3	C	X	
3055	Code list responsible agency, coded	AN..3	C	X	
4405	Status, coded	AN..3	C	X	

<b>DTMa DATE/TIME/PERIOD</b>				<b>M</b>	<b>2</b>
Période de validation (A) Début / (B) fin					
C507	DATE/TIME/PERIOD		M	R	
2005	Date/time/period qualifier	AN..3	M	R	(A) "194" (B) "206"
2380	Date/time/period	AN..35	C	R	(A) Date de début (B) Date de fin
2379	Date/time/period format qualifier	AN..3	C	R	"102" format 'CCYYMMDD'

<b>GISa GENERAL INDICATOR</b>			<b>M 1</b>	
Indicateur de la personnalisation carte SIS				
C529	PROCESSING INDICATOR		M	R
7365	Processing indicator, coded	AN..3	M	R
1131	Code list qualifier	AN..3	C	X
3055	Code list responsible agency, coded	AN..3	C	X
7187	Process type identification	AN..17	C	X

<b>UNT MESSAGE TRAILER</b>			<b>M 1</b>	
Fin du message				
0074	NUMBER OF SEGMENTS IN A MESSAGE	N..6	M	R
0062	MESSAGE REFERENCE NUMBER	AN..14	M	R

<b>IHFN</b>	In House File Normalised
-------------	--------------------------

<b>PNA1</b>	1
<b>GIRA1</b>	2
<b>DTMA1</b>	3
<b>GISA1</b>	4

Légende		
Align	L	Left / Gauche / Links
	R	Right / Droite / Rechts
Typ	AN	AlphaNumeric / Aphanumérique / Alfameriek
	A	Alphabetic / Aphabetique / Alfabetisch
	N	Numeric / Numérique / Numeriek
St.	M	Mandatory / Obligatoire / Noodzakelijk
	C	Conditional / Conditionnel / Conditioneel

PNA1 Assuré social							
Fields	Len.	from	to	Value/Description	Align	Typ	St.
Rec-type	5	1	5	"PNA1"	L	AN	M
PNA1-3925	3	6	8	"504"	L	AN	M
PNA1-7402	13	9	21	NISS INSZ	R	AN	M

GIRA1 Carte SIS (N° logique + état)							
Fields	Len.	from	to	Value/Description	Align	Typ	St.
Rec-type	5	1	5	"GIRA1"	L	AN	M
GIRA1-7297	3	6	8	"552"	L	AN	M
GIRA1-7402a	10	9	18	N° logique de la carte SIS	R	AN	M
GIRA1-7402b	1	19	19	Indicateur de l'état de la carte SIS "C" Conforme "A" Annulation "W" Warning	L	AN	M

DTMA1 Période de validation (A) Date de début (B) Date de fin							
Fields	Len.	from	to	Value/Description	Align	Typ	St.
Rec-type	5	1	5	"DTMA1"	L	AN	M
DTMA1-2005	3	6	8	(A) "194" (B) "206"	L	AN	M
DTMA1-2380	8	9	16	(A) Date de début (B) Date de fin	R	AN	M
DTMA1-2379	3	17	19	"102" format 'CCYYMMDD'	L	AN	C

GISA1 Indicateur de la personnalisation de la carte SIS							
Fields	Len.	from	to	Value/Description	Align	Typ	St.
Rec-type	5	1	5	"GISA1"	L	AN	M
GISA1-7365	1	6	6	Indicateur de la personnalisation de la carte SIS "W" en attente "P" Personnalisé	L	AN	M



